



In this issue:

- Giove jaw crusher with afterscreen and return conveyor
- Destroyer 1312 in recycling
- Frontier in ground, road & water works
- Novum with removable side conveyor
- Electric Explorer 1800 3-deck, Eco-drive



EDITORIAL

A gaze into the future

What will the future bring us? Where are we coming from?

First a look back.

Since 1988 Keestrack has designed and produced mobile screening and crushing equipment in-house. The complete high -tech production process is privately owned with a strong focus on Quality and Innovation. Research and Development ensures that Keestrack keeps up with the expectations of its customers. All Keestrack machines are continuously adapted to the wishes of the market.

Keestrack was the first with direct feed screens. The original Keestrack concept is today's industry standard. Because of this concept the application fields have increased because the screen can be used as a pre-screen for rough material or as a precision screen for fines.

After the development of the Frontier the Keestrack team completed the range of screeners with the compact but top performing Combo, then the heavy duty Novum and finally the Explorer range.

After the success of the screen Keestrack started developing a range of mobile impact crushers with after screen and return conveyor. These crushers produce a high quality end-product against minimal costs. After the acquisition of OM in 2010, Keestrack now has a complete range of jaw crushers in its product range.

Currently Keestrack has a wide range of:

- mobile scalping screens and classifiers
- mobile impact crushers
- mobile jaw crushers
- mobile cone crushers

Future

Keestrack wants to keep expanding and improving their product range by innovation and expansion.

Our highly trained and motivated dealer network provides an excellent service to our customers. The training the dealer receives from Keestrack gives the customer the peace of mind that they are dealing with some of the most professional people in the business.

We would like to keep you up to date with this newsletter.

Kees Hoogendoorn
President
Keestrack Group



Easy exchangeable after screen of 1200 x 3000 mm (3'94 x 9'10")



The result of 4 hours of crushing in Ferro-metals



Digital screen to control the crusher

An innovative solution in the Recycling industry

The family owned company Hector VAN MOER and sons was on the look out for an innovative solution to recycle construction and demolition (C&D) waste. Traditionally the recycling industry uses an impact crusher, but owner Dirk Van Moer was looking for a more sophisticated solution. "In our C&D-waste there are often big pieces of steel which will lead to a lot of down-time when using a impact crusher. That is why we prefer a jaw crusher". VAN MOER started his search for a suitable solution to fit their requirements and found the solution with OMTRACK (a KEESTRACK-group company) because the OMTRACK crushers are equipped with the patented Non-Stop System (NSS) to guarantee a continues production process and to protect the crusher against an un-crushable feed. If a big unbreakable piece enters the crushing chamber, the jaws will open automatically and reset itself to the original setting.

VAN MOER uses their jaw crusher mainly on their own sites for demolition, ground works and soil remediation projects and they have to follow strict quality guidelines for the Belgian COPRO- approval. Copro approved products can be sold as a commodity. When VAN MOER visited OMTRACK in Italy they told the company what they needed the crusher to do.

The result was on show during the Mat Expo exhibition in Belgium. The new Giove jaw crusher (1100 x 750 mm/3'7.3"x2'5.5") in a Closed Circuit with easy removable after screen of 1200 x 3000mm/3'94 x 9'10", a pre-screen with side discharge conveyor, a hopper with extended hopper walls, a highly effective overband magnet, a spray-dust suppression system, radio remote control, central greasing system, diesel fuel pump and a optical weighing system with data transfer to be able to view production capacity remotely.

"If we crush on location we save on transport and dumping costs. Furthermore we can reuse the material on the spot by using the after screen which saves on commodities. Screening could be done by a separate screener but we have chosen to integrate the screen to save transport costs and space on site." According to Dirk Van Moer. Because of these cost reductions, Van Moer believes that a Return On Investment of 5 years is realistic which is very good for a machine which is not used daily.

This client customised Giove CC, which is painted in the company fleet colours, weighs 62 tons of which the crushing unit only weighs 19 tons.

With VAN MOER the Giove CC produces 130 tons an hour at CSS 45-46 mm, of which \pm 100 tons Copro approved crushed aggregate of 0-40 mm and \pm 30 tons natural fines of 0-15 mm. Fuel consumption of the Cummins engine at 1850 rpm is 0,20 liter per produced ton.



Giove CC jaw crusher with extended hopper walls. Container to collect the Ferro-metals and tank with spray water



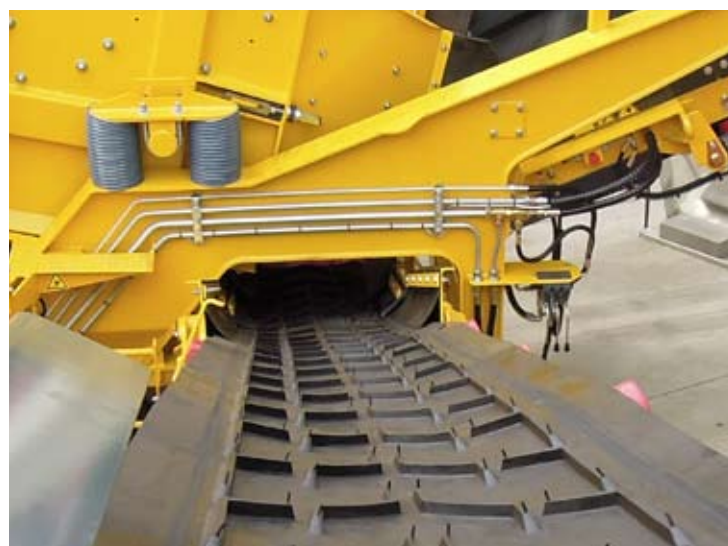
The return conveyor and pre-screen with side conveyor



Giove CC jaw crusher at the factory site in Italy

Visionary Design

Keestrack's designs with a clear vision: the client, and this on the highest level! This way Keestrack builds reliable and highly effective crushing and screening equipment. Everything off the Keestrack machines is designed and produced in-house under own supervision. The design is focused on safety, ease of use and productivity. Access of the machine for maintenance, replacing wear parts and repair is essential to be able to operate as efficient and effective as possible.



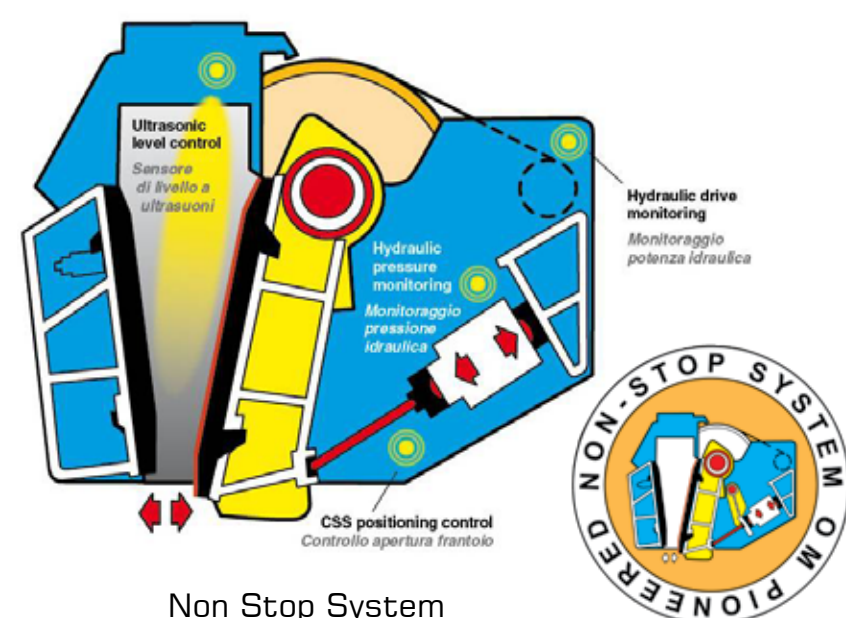
Steel hydraulic lines

For example Keestrack uses steel hydraulic lines where possible. When a hydraulic hose leaks you only need to replace a small hose about 1 meter long.

Another example of visionary design is the screen box which can be lifted hydraulic.



Access under the screen box



Non Stop System

A Non-Stop System (NSS) is used on the jaw crushers to guarantee a continuous production process and to protect the crusher against an un-crushable feed. If a big unbreakable piece enters the crushing chamber, the jaws will open automatically and reset itself to the original setting.

Keestrack's impact crushers with pre-screen, dirt conveyor and optional after-screen with return conveyor offers a huge capacity and ensures easy access because of its hydraulic tilting chassis.

All equipment of the Keestrack Group is compact, mobile and easy to transport and can be used in multiple applications. All these machines are operational within minutes.

The newest legislation will be followed strictly and all the Keestrack machines confirm to these restrictions and demands. The models are continuously adjusted to the changing demands in the market. The new TIER III machines are, for example, equipped with extra high quality (3 μ m) water absorbing filters to optimize the fuel quality. Also the fuel tank has a condensation drain.

The cone crushers have a quick release system on the feeder, interchangeable with a pre-screen. Also a 2-deck after-screen of 4500 mm x 1500 mm and return conveyor is optional available.



Hydraulic lifted chassis of impact crusher



Cone crusher with quick release system



Mobile from the smallest screen (17 metric ton)...



... until the largest impact crusher (57 metric ton)

Keestrack concept

- optimum flexibility and mobility with the highest performance and reliability
- perfect results at the lowest costs
- robust and smart design with good access for maintenance, repair and exchanging wear parts
- low weight and compact transport dimensions
- up to 25% greater fuel efficiency by using "load sensing" hydraulics on all screens
- operational in a very short time
- low loading height

Clever design

- very big effective screen surface on all Keestrack screens and pre- and after-screens of all crushers
- excellent access under the screen box and under the crusher chamber of the impact crushers (hydraulically lifted)
- easy to exchange wear parts
- standard heavy duty apron feeder on Combo, Novum & Frontier screen
- steel hydraulic lines where possible (safer, easier and quicker to repair)
- protected greasing nipples
- condensation drain on the fuel tank
- extra high quality water absorbing filters
- user friendly controls
- perfect accessible engine compartment

9th Impact crusher in recycling for Kok Lexmond

Kok Lexmond is active in ground works, road & hydraulic engineering for 30 years and deals with recycling, waste material management and trade in primary and secondary commodities, transport and rental equipment. "With our track record and years of experience Kok Lexmond knows exactly which qualities play a crucial role and KEESTRACK knows how to fulfill these" according to Mr. Kok.

The Destroyer 1312 has a capacity over 350 metric tons an hour. The overband magnet has been designed to recover ferrous metal of 2 meters long by a diameter of 30 mm. Above this the KEESTRACK equipment is very user friendly and all components are easily accessible. The chassis can be lifted hydraulically to access below the crushing chamber for maintenance. Also the Kees track Impact crusher produces a perfect end product against a minimum of costs.

This explains the many years of cooperation between both companies. Along with some screens KEESTRACK delivered recently, the ninth impact crusher. On request of the customer not in the standard Kees track-yellow but in the colors of KOK.



Kees track Frontier for Martens & Van Oord

The Kees track dealer in the Netherlands, Van Bommel, recently delivered a new Kees track Frontier at Martens & Van Oord in Moerdijk.

The new Frontier has a heavy duty feed hopper with a heavy duty apron feeder and hydraulic actuated hopper wall extensions. The 2 deck screen box of 4.500 mm x 1.800 mm has a total screening surface of 16,2 m² and is adjustable in height by hydraulics.

Very wide conveyors (fines 1.000 mm wide) ensure a huge capacity. The Frontier is driven by a Deutz Silent diesel engine of 125 hp. The engine compartment has been re-designed to optimize the access for maintenance. Most hydraulic components are made by Rexroth and Sauer Danfoss. The screener is equipped with a massive overband magnet, remote controls and hydraulic foldable walkways and a central greasing system. The Frontier has been painted in the white / green company colors of Martens & van Oord.

Martens & Van Oord is active in ground works, road & hydraulic engineering and related disciplines, like trade in commodities. Since the establishment in 1986 the company has developed into a leading company within the sector.



Which information is available on-line

On the Kees track website you can find information about a lots of topics like:

- our company profile
- which tradeshow and events you can find Kees track or our dealers
- pictures of past events and trade shows
- news and stories published in the press and trade journals and magazines
- product information
- how to contact our service departments and spare parts departments
- the used equipment we offer
- downloads like: brochures, newsletters and images
- how to reach our departments and who your contact is

WWW.KEESTRACK.COM



Novum with removable side conveyor

De Bree Solutions is active on many areas including waste management, soil remediation and green recycling like composting. Interparts, the Kees track dealer in Flanders, provided a solution for the specific demands of De Bree Solutions.

The Novum with removable side conveyor was the solution because you can change it from a 3-split into a 2 split screen very quickly.

It is possible to disassemble the mid-size conveyor belt quickly because of quick couplers for the hydraulics. After removing the mid fraction conveyor the oversize conveyor will be positioned under the screen box. This way the middle fraction and the oversize fraction will be discharged together. In particular the recycling industry has a demand for split fractions. This solution reduces the transport and labor costs.



Explorer 1800 2 or 3-deck Eco-Drive

The 3 or 4 split classifier Explorer 1500 & 1800 is now available in an electric version.



The classifier can be driven in several ways:

- connected to the power network
- connected to a generator, for instance a crusher or a local generator
- own generator driven by the diesel engine

Advantages:

- less operation and maintenance costs
- less emissions
- saves energy
- environment friendly



The green electric alternative

Our Experience

Your key to success

KEESTRACK

MOBILE CRUSHING AND SCREENING EQUIPMENT

KEESTRACK nv • Taunusweg 2 • 3740 Bilzen • Belgium • Tel: +32 89 51 58 51
Fax: +32 89 51 58 50 • info@keestrack.net • www.keestrack.com

OMTRACK spa • Via Postumia 62 • 31050 Ponzano Veneto (Treviso) • Italia
Tel: +39 0422 441 311 • Fax: +39 0422 441 499 • omtrack@omtrack.it • www.omtrack.it

